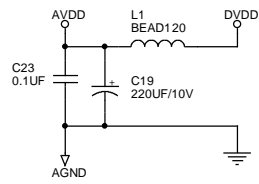
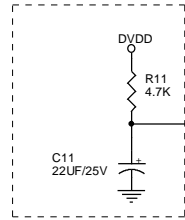


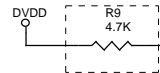
Note: DVDD is 3.3V.



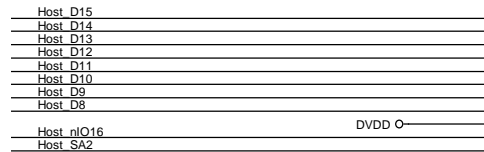
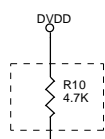
Note4: R11,C11 is for power on reset. It can also be reset by Host Processor.



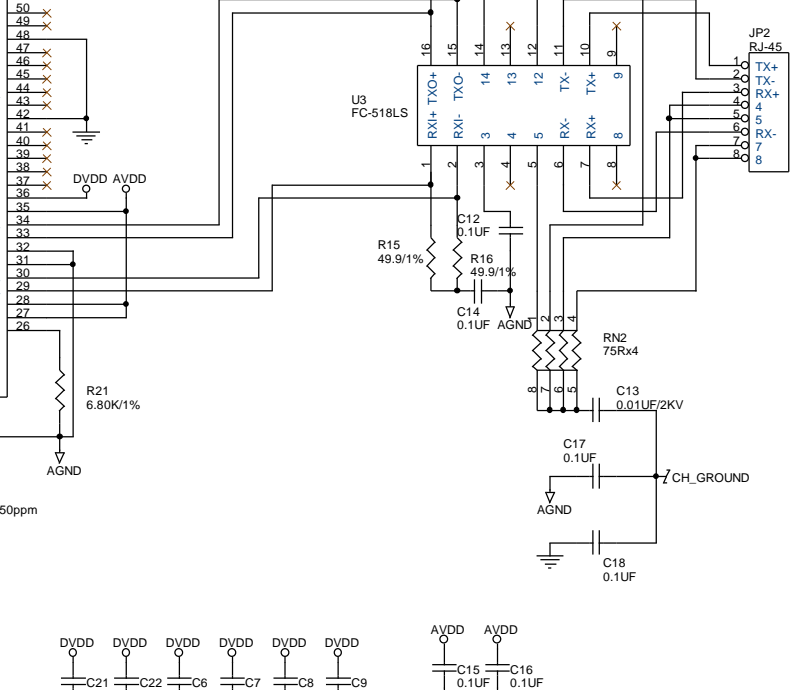
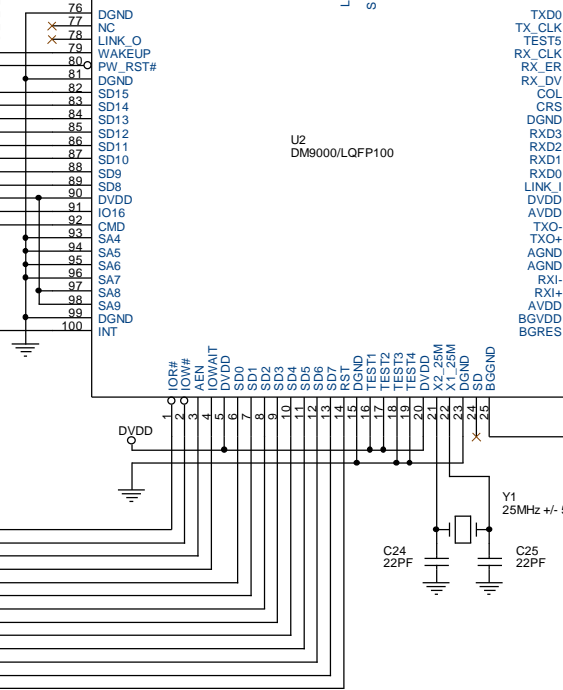
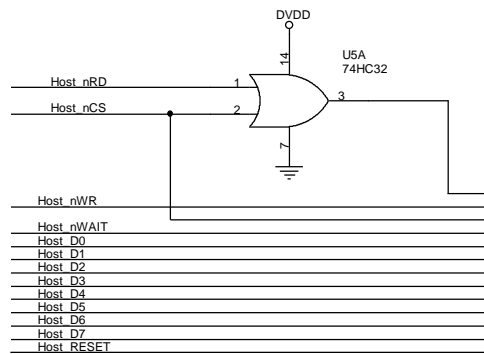
Note2: R9 pull high, LED mode is mode 1; otherwise it is mode 0.



Note1: 8/16 bit selection; Removed R10 when using 16-bit mode; otherwise is 8-bit mode.



Note3: SA4-SA9 default IO base address is 0x300; it should be matched with TXD[2:0] if U1 93C46 is not available.



IO base address = Host_nCS

IO data address = Host_nCS + 0x04 (if Host_SA2 connect to CMD (92pin))

Note: DM9000 Host Parallel Bus, for 8/16bits
For Application Reference Design Only

DAVICOM Semiconductor, Inc.		
Title	DM9000 10/100M Ethernet For Embedded System	
Size	Document Number	Rev
Custom	DM9000 Host Parallel Bus, for 8/16bits	1.0
Date:	Tuesday, July 01, 2003	Sheet 1 of 1